

Laplace Synthesis Validation through Measurements on Underground Transmission Cables

Validación de la Síntesis de Laplace a través de Mediciones en Sistemas de Cables Subterráneos

Uribe-Campos Felipe Alejandro

Departamento de Mecánica Eléctrica

División de Ingenierías

Universidad de Guadalajara, CUCEI, Jalisco

E-mail: fauribe@ieee.org

Information on the article: received: March 2013, reevaluated: June and July 2013, accepted: August 2013

Abstract

Underground cable electrical parameters ZY as well as their modal propagation characteristics are highly frequency dependent which in certain cases turns its analysis difficult. To perform electromagnetic transient studies of cables the calculation of electrical parameters is essential to obtain the waves propagation solution through the multiconductor system. At the same time this requires to solve the inverse Laplace transform on a numerical form. Although the analytic Laplace transform has an indisputable accuracy, the application of its numerical version up-to-date has not been completely accepted. A complete methodology is developed in this work to guide analyst engineers or graduate students in the calculation of electromagnetic transients of underground cable systems. Finally, to help the validation of the numerical inverse Laplace transform a scaled prototype experiment is performed in the laboratory in which a transient step-response at the remote end of an energized conductor is measured.

Resumen

Los parámetros eléctricos ZY de cables subterráneos y sus características de propagación modal son altamente dependientes de la frecuencia lo que en ciertos casos dificulta su análisis. Al realizar estudios de transitorios electromagnéticos en cables el cálculo de parámetros es primordial para obtener la solución de la propagación de ondas a través del sistema multiconductor. Esto a su vez requiere resolver la transformada inversa de Laplace en forma numérica. Aunque la transformada analítica de Laplace tiene una indiscutible precisión, la aplicación de su versión numérica no ha sido, hasta la fecha, totalmente aceptada. En este trabajo se desarrolla un metodología completa para guiar al ingeniero analista o estudiantes de posgrado al cálculo de transitorios electromagnéticos en sistemas de cables subterráneos. Finalmente, para ayudar a validar la transformada numérica inversa de Laplace se desarrolla en el laboratorio un experimento escalado prototipo, en el cual se mide la respuesta transitoria a un escalón de voltaje en el extremo receptor de un cable energizado.

Keywords:

- transient analysis
- underground power cables
- ground return
- Laplace Transform
- laboratory measurements

Descriptores:

- análisis transitorio
- cables de potencia subterráneos
- retorno por tierra
- transformada de Laplace
- mediciones en laboratorio

Introduction

An accurate calculation of electromagnetic (EM) transients on buried cable systems may take into account the Skin Effect in the ground and cable conductors, while relaxation effects on cable insulation layers (Wedepohl and Wilcox, 1973; Dommel, 1986; Marti, 1982; Marti, 1988; Uribe *et al.*, 2002; Schellkunoff, 1934; Pollaczek, 1926; Uribe *et al.*, 2004; Semlyen, 1985; Saad *et al.*, 1996; Wedepohl, 1983). Consequently, the modal propagation functions of the cable system are highly influenced by the inductive loops formed between the power cables through the ground (Wedepohl and Wilcox, 1973). Thus, due to electromagnetic inductions phenomenon, the ground model is evaluated in this paper by means of two approaches for a qualitative comparison: the numerical solution of the exact Pollaczek's integral and using the classical approximate formulas previously issued by Wedepohl, Ametani and Semlyen (Wedepohl and Wilcox, 1973; Dommel, 1986; Semlyen, 1985; Saad *et al.*, 1996).

A benchmark model for calculating the voltage transient step-responses at the remote-end of a buried cable system is proposed in this paper (Wedepohl and Wilcox, 1973; Dommel, 1986). The transient step-response is synthesized in this paper through the Numerical Laplace Transform (NLT) (Uribe *et al.*, 2002; Wedepohl, 1983).

Finally, the calculated responses are qualitative, validated here through a laboratory measurement performed on a scaled prototype experiment.

A Benchmark case for the Electromagnetic Transient Analysis of Underground Cables

The voltage and current wave propagation in underground cable transmission systems is described by (Wedepohl and Wilcox, 1973; Dommel, 1986; Marti, 1982; Marti, 1988; Uribe *et al.*, 2002):

$$\frac{d^2}{dz^2} \mathbf{V} = \mathbf{Z} \mathbf{Y} \mathbf{V} \quad (1a)$$

$$\frac{d^2}{dz^2} \mathbf{I} = \mathbf{Y} \mathbf{Z} \mathbf{I} \quad (1b)$$

where \mathbf{Z} and \mathbf{Y} are the series-impedance and the shunt-admittance matrices both in per unit length, respectively. The solution of (1a) and (1b) is (Wedepohl and Wilcox, 1973; Dommel, 1986; Marti, 1982; Marti, 1988; Uribe *et al.*, 2002; Schellkunoff, 1934):

$$\mathbf{V}(z) = \mathbf{Z}_c(\omega) \mathbf{H}_-(\omega) \mathbf{C}_1 + \mathbf{Z}_c(\omega) \mathbf{H}_+(\omega) \mathbf{C}_2 \quad (2a)$$

$$\mathbf{I}(z) = \mathbf{Y}_c(\omega) \mathbf{H}_-(\omega) \mathbf{C}_1 - \mathbf{Y}_c(\omega) \mathbf{H}_+(\omega) \mathbf{C}_2 \quad (2b)$$

where

$$\mathbf{H}_\pm(\omega) = \exp(\pm \sqrt{\mathbf{Z} \cdot \mathbf{Y}} \cdot l) \quad (2c)$$

$$\mathbf{Y}_c(\omega) = \mathbf{Z}^{-1} \sqrt{\mathbf{Z} \cdot \mathbf{Y}} \quad (2d)$$

$$\mathbf{Z}_c(\omega) = \mathbf{Y}_c(\omega)^{-1} \cdot \sqrt{\mathbf{Z} \cdot \mathbf{Y}} \quad (2e)$$

\mathbf{C}_1 and \mathbf{C}_2 are the integration constant vectors determined by the boundary conditions, \mathbf{H}_\pm is the transmission system propagation function, \mathbf{Y}_c and \mathbf{Z}_c are the characteristic admittance and impedance matrices, respectively (Uribe *et al.*, 2002).

An underground cable transmission system of length, l , as the one shown in Figure 1, can be represented by a two port network. A nodal admittance representation, relates the voltage and current responses from the sending end at $z = 0$ to the remote end at $z = l$ (Wedepohl and Wilcox, 1973; Dommel, 1986; Marti, 1982; Marti, 1988; Uribe *et al.*, 2002; Schellkunoff, 1934):

$$\begin{bmatrix} \mathbf{I}_0(s) \\ \mathbf{I}_l(s) \end{bmatrix} = \begin{bmatrix} \mathbf{A} & \mathbf{B} \\ \mathbf{B} & \mathbf{A} \end{bmatrix} \begin{bmatrix} \mathbf{V}_0(s) \\ \mathbf{V}_l(s) \end{bmatrix} \quad (3a)$$

and

$$\mathbf{A} = \mathbf{Y}_c \coth(\sqrt{\mathbf{Z} \cdot \mathbf{Y}} \cdot l) \quad (3b)$$

$$\mathbf{B} = -\mathbf{Y}_c \operatorname{csch}(\sqrt{\mathbf{Z} \cdot \mathbf{Y}} \cdot l) \quad (3c)$$

where $\mathbf{V}_0(\mathbf{s})$ and $\mathbf{I}_0(\mathbf{s})$ are the voltage and current vectors at the sending-end of the line $z = 0$. $\mathbf{V}_l(\mathbf{s})$ and $\mathbf{I}_l(\mathbf{s})$ are vectors of voltages and currents at remote-end of the transmission line or, in this case, cable system $z = l$.

Accurate calculation of $\mathbf{Z} \mathbf{Y}$

The flat buried cable system shown in Figure 1a formed three coupled loops between cables through the ground. In addition, each cable (as shown in Figure 1b) formed internal and external loops between the nucleus and the sheath, respectively. The internal loop is due to the impedances of the nucleus, *EP* insulation and the internal sheath, while the external loop is due to the impedances of the external sheath, the *PVC* jacket and the ground (Wedepohl and Wilcox, 1973).

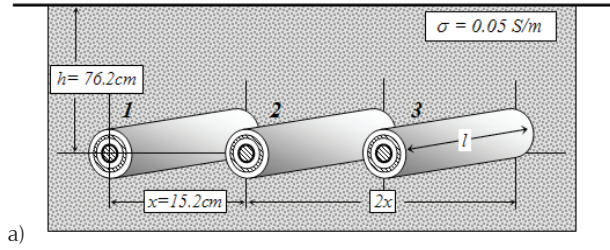
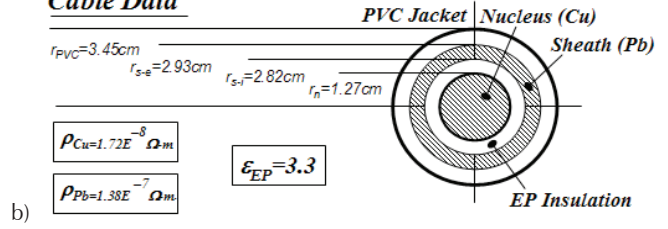
Ground Plane

Cable Data


Figure 1. Underground cable transmission system reported in Wedepohl and Wilcox (1973), a) cable system layout, b) cable physical dimensions and material properties

A well known expression for calculating the nucleus impedance of a cylindrical cable conductor is (Wedepohl and Wilcox, 1973):

$$Z_n = \frac{\rho_{Cu}}{2\pi r_n \cdot p} \frac{I_0(r_n/p)}{I_1(r_n/p)} \quad (4a)$$

Where I_0 and I_1 are the zero and first order modified Bessel functions, p is the skin-effect layer thickness and the other variables are defined at the nomenclature.

The insulation impedances between two contiguous cylindrical cable conductors with radii r_{ext} and r_{int} as shown in Figure 1b are given by (Wedepohl and Wilcox, 1973):

$$Z_{ins} = \frac{j\mu_0\omega}{2\pi} \ln(r_{ext}/r_{int}) \quad (4b)$$

The internal, external and mutual impedances of the tubular sheath conductor are given by the Schellkunoff theory for cylindrical formulae (Schellkunoff, 1934):

$$Z_{s-i} = \frac{\rho_{Pb}}{2\pi r_{s-i} p} \left\{ \frac{K_1(\varsigma_{ext})I_0(\varsigma_{int}) + K_0(\varsigma_{int})I_1(\varsigma_{ext})}{W} \right\} \quad (4c)$$

$$Z_{s-e} = \frac{\rho_{Pb}}{2\pi r_{s-e} p} \left\{ \frac{K_1(\varsigma_{int})I_0(\varsigma_{ext}) + K_0(\varsigma_{ext})I_1(\varsigma_{int})}{W} \right\} \quad (4d)$$

$$Z_{s-m} = \frac{\rho_{Pb}}{2\pi r_{s-i} \cdot r_{s-e}} \left\{ \frac{1}{W} \right\} \quad (4e)$$

where $\varsigma_{int} = r_{s-i}/p$, $\varsigma_{ext} = r_{s-e}/p$ and the Wronskian is $W = K_1(\varsigma_{int})I_1(\varsigma_{ext}) - K_1(\varsigma_{ext})I_1(\varsigma_{int})$.

The ground return impedances $Z_G(\omega)$ are calculated in this paper through two different approaches for a qualitative comparison purpose.

The first approach is obtained solving the Pollaczek's integral numerically and the second is obtained using classical closed-form approximations (Dommel, 1986; Uribe *et al.*, 2004).

First, the Pollaczek's integral is solved with the efficient, accurate and reliable algorithmic strategy proposed in Uribe *et al.* (2004). For comparison, the direct numerical integration is implemented here by using the adaptive Gauss-Lobatto quadrature routine, *quadl*, available from Matlab[®] v7 (Gander and Gautschi, 2000).

Then the closed-form solutions previously issued by Wedepohl, Ametani and Semlyen are also implemented in this paper to verify their application accuracy ranges (Wedepohl and Wilcox, 1973; Dommel, 1986).

On assuming a *Quasi-TEM_z* propagation mode, the self and mutual ground-return impedance $Z_G(\omega)$ of the cable system are given by (Wedepohl and Wilcox, 1973; Pollaczek, 1926; Uribe, 2004):

$$Z_G(\omega) = \frac{j\omega\mu_0}{2\pi} [K_0(d/p) - K_0(D/p) + J] \quad (5a)$$

and

$$J = \int_{-\infty}^{+\infty} \frac{\exp[-2 \cdot h \sqrt{\beta^2 + 1/p^2}]}{|\beta| + \sqrt{\beta^2 + 1/p^2}} \cdot \exp(j\beta x) d\beta \quad (5b)$$

where J is the Pollaczek's integral, β is the dummy variable and the other variables are listed in the nomenclature. The combination of regular and irregular oscillations due to the complex exponential factors in (5b) provokes convergence problems when applying generic quadrature routines at certain physical variable application ranges (Uribe *et al.*, 2004).

On introducing in (5b) the variable change $\beta = u/|p|$ and the following defined dimensionless parameters, we obtain

$$\xi = \frac{2h}{|p|} \text{ and } \eta = \frac{x}{2h} \quad (5c,d)$$

and after some algebraic manipulations, we have

$$J = -2j \int_0^{+\infty} [F(u) - u + j \cdot G(u)] \cdot \exp[-\xi \cdot F(u)] \dots \times \exp[-j \cdot \xi \cdot G(u)] \cdot \cos(\xi \eta u) du \quad (6a)$$

where

$$F(u) = \sqrt{u^2 + \sqrt{u^4 + 1}} / \sqrt{2} \quad (6b)$$

and

$$G(u) = \sqrt{-u^2 + \sqrt{u^4 + 1}} / \sqrt{2} \quad (6c)$$

Basically, the algorithmic strategy proposed in Uribe *et al.* (2004) is based on two aspects; a pure damping exponential truncation criterion and on a zero crossings identification procedure for harmonic oscillatory functions in (6a).

To implement the direct numerical integration of Pollaczek's integral (5b) may be transformed into:

$$J = 2 \int_0^{+\infty} \frac{\exp[-2 \cdot h \sqrt{\beta^2 + 1/p^2}]}{\sqrt{\beta^2 + 1/p^2} + \beta} \cdot \cos(\beta x) d\beta \quad (7a)$$

The truncation criterion for (7a) is based on the properties of the damping exponential factor in (6a) when $F(u) \rightarrow u$. Thus, for the second factor in (6a) the entire range of u can be split-up into:

$$\int_0^{\infty} \exp(-\xi \cdot u) du \cong \int_0^{u_{\max}} \exp(-\xi \cdot u) du + \varepsilon_{rel} \quad (7b)$$

where ε_{rel} is the relative error defined in this paper as:

$$\varepsilon_{rel} = \exp(-\xi \cdot u_{\max}) / \xi = 10^{-6} \quad (7c)$$

with a truncation limit

$$u_{\max} = -\log(\xi^{-6}) / \xi \quad (7d)$$

After Pollaczek's mathematical statement in 1926, electrical engineering researchers have looked forward for many years of closed-form approximations to $Z_G(\omega)$ (Wedepohl and Wilcox, 1973; Pollaczek, 1926). Some of

the most often used in EMTP applications are the ones proposed by Wedepohl, Ametani and Semlyen.

Wedepohl and Wilcox (1993) presented a formula for calculating the self and mutual $Z_G(\omega)$ valid for cables buried at usual depths around $h \leq 1m$, $d \leq 1m$ and $|x/p| < 1/4$:

$$Z_G(\omega) = \frac{j\omega\mu_0}{2\pi} \cdot \left[-\log(\gamma d / 2p) + 0.5 - \frac{4h}{3p} \right] \quad (8a)$$

where γ is the Euler constant.

Another important approximation is the one implemented in the cable constants routine of the EMTP program (Dommel, 1986). Basically here, Ametani replaces Pollaczek integral by the one of Carson, assuming in (5b) the following consideration (Dommel, 1986):

$$h \cdot \sqrt{\beta^2 + 1/p^2} \cong h \cdot |\beta| \quad (8b)$$

Around 1982, Wedepohl conjectured a formula for calculating the self Z_G of a buried conductor. The formula is based on the complex depth penetration of the electromagnetic fields in the ground. Subsequently, in 1985 Semlyen reported the following formula (Semlyen, 1985):

$$Z_G(\omega) = \frac{j\omega\mu_0}{2\pi} \cdot \log \left(1 + \frac{p}{r_{PVC}} \right) \quad (8c)$$

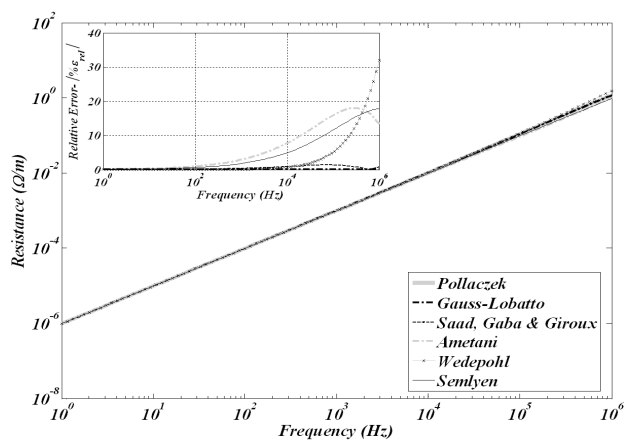
where r_{PVC} is the external cable radius (Figure 1b), over the outer insulation PVC (Polyvinyl chloride) jacket.

In addition, Saad, Gaba and Giroux published a very interesting closed-form approximation to Pollaczek integral based in the complex ground return plane and in the Cauchy's integral theorem solution (Saad *et al.*, 1996). The derivation process of this formula is very similar to the early one employed to obtain a simplified model of the Carson's integral for calculating Z_G of aerial lines (Dommel, 1986):

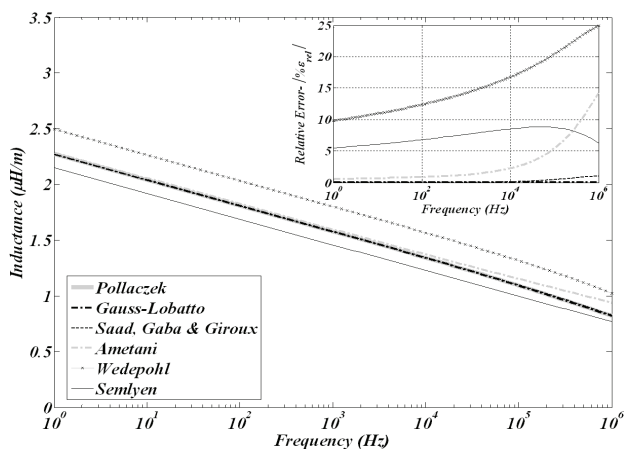
$$Z_G(\omega) = \frac{j\omega\mu_0}{2\pi} \cdot \left[K_0(d/p) + \frac{2}{4 + (x/p)^2} \cdot \exp(-h/p) \right] \quad (8d)$$

The self and mutual ground impedances Z_G for each of the current loops formed between the buried cable system in Figure 1, are calculated in this paper by solving numerical Pollaczek integral and by using the above closed-form approximations.

It can be seen in Figures 2 and 3, that in both impedance calculations the closed-form approximations as well as the direct numerical quadrature of Gauss/Lobatto are in good agreement with the algorithmic solution



a)



b)

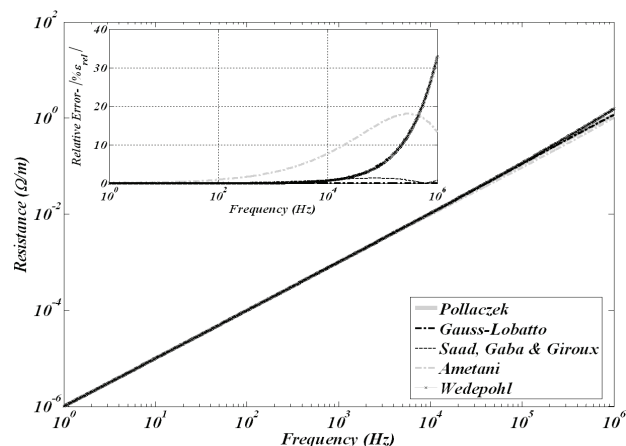
Figure 2. Self $Z_C(\omega)$ for each cable in Figure 1a calculated with Pollaczek (5a) and with approximated formulas. The relative errors for these approximations are also shown in the small square of each figure, a) resistances, b) inductances

developed by Uribe *et al.* (2004) used in this paper to establish a benchmark for calculating $Z_C(\omega)$.

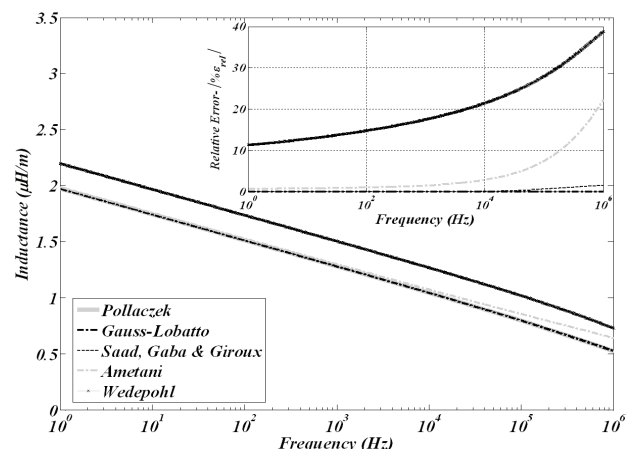
However, there are practical engineering cases when the distance between cables x (Figure 1) is considerably long, or when the cable trench is surrounded by soil with a very low resistivity (Dommel, 1986).

Appendix I shows the calculated mutual external loop of $Z_C(\omega)$ for the buried cable transmission system shown in Figure 1, but with a separation distance between cables of $x = 30$ m and with an homogeneous ground conductivity of $\sigma = 1$ S/m.

The dispersive dielectric effects of each cable insulation layer (better known as relaxation effects), are introduced into the electromagnetic transient analysis by the shunt admittance matrix, based in the following relation (Dommel, 1986):



a)



b)

Figure 3. Mutual $Z_C(\omega)$ between cables shown in Figure 1a calculated with Pollaczek (5a) and approximated approaches. Relative error details are also shown in the upper corner of each figure, a) resistances, b) inductances

$$Y(\omega) = G(\omega) + j \cdot \omega C(\omega)$$

where $G(\omega)$ is the shunt conductance which represents the Ohmic losses and $C(\omega)$ is the shunt capacitance which represents displacement current flowing between conductors through the specific dielectric. Assuming a concentric cable geometry, the capacitances are given by (Dommel, 1986):

$$C(\omega) = \frac{2\pi\epsilon_0\epsilon_r(\omega)}{\ln(r_{\text{ext}}/r_{\text{int}})} \quad (9b)$$

where $\epsilon_r(\omega) = \epsilon_r'(\omega) - j \cdot \epsilon_r''(\omega)$ is the frequency dependent complex permittivity, which has a vector relation

to the loss tangent loss factor through the electrical conductances as follows (Dommel, 1986):

$$G(\omega) = \omega C(\omega) \cdot \tan \delta \quad (9c)$$

where $\tan \delta$ is the insulation loss factor. Another option to evaluate the complex permittivity is to synthesize ϵ_r through a multi-term order Debye or Cole-Coles model (Dommel, 1986):

$$\epsilon_r(\omega) = \epsilon_\infty + \sum_{i=1}^N \frac{\Delta \epsilon_i}{1 + j\omega \cdot \tau_i} \quad (9d)$$

where ϵ_∞ is the very high frequency permittivity value, N is the number of relaxation terms, τ_i used for the fitting, $\Delta \epsilon = \epsilon_s - \epsilon_\infty$ and ϵ_s is the static frequency permittivity value.

Modal propagation properties

The characteristics of wave attenuation and velocities are thus explained by The Theory of Natural Modes of Propagation by Wedepohl (Wedepohl and Wilcox, 1973; Dommel, 1986). The voltage and current wave propagation modes of the system are characterized by $H_\pm(\omega)$ and $Z_C(\omega)$ in equations (2c) and (2e), respectively.

The propagation modes of the buried cable system in Figure 1 resemble approximations of the aerial modes of Clarke (Wedepohl and Wilcox, 1973; Dommel, 1986), where two types of modes can be identified. The metallic conductor (two differential modes) and the ground return. In addition, the presence of the conductor sheaths add even more combinations of these mainly two basic types of propagation modes.

Figure 4 shows the decreasing monotonic behavior of $|Z_C|$ and $|e^{\pm\sqrt{ZY} \cdot l}|$ which have been evaluated with two different $Z_C(\omega)$ models (Pollaczek and Wedepohl). The mode switching effect on $H_\pm(\omega)$ has been removed by using the alternate method proposed by Wedepohl in (Wedepohl *et al.*, 1996) for calculating transformation matrices tracking the order of eigenvectors and eigenvalues with their previous one corresponding frequency. The Z_C of the system directly depends on the relation between frequency dispersion conductor effects and on the insulation relaxation effects of the cable.

In Figure 4a the influence of the ground-modes is noticeably greater for the metallic conductor loops according to the high inductive $Z_C(\omega)$ at the low frequency range as seen in Figures 2b and 3b. It can be noticed from Figure 4b, that the propagation function depends

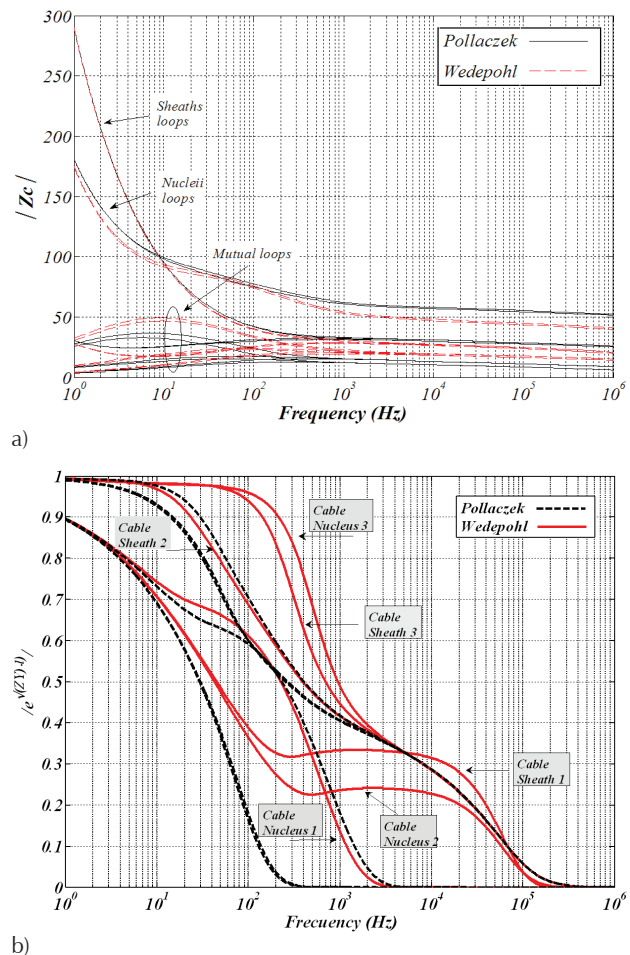


Figure 4. Modal propagation functions calculated with Pollaczek and Wedepohl $Z_C(\omega)$ models for the benchmark cable system shown in Figure 1, a) magnitude of Z_C , b) magnitude of $\exp(\pm\sqrt{ZY} \cdot l)$

on the product of the cable parameters ZY . Where the influence of the high inductive $Z_C(\omega)$ is inversely related to the cable system modes. This can be corroborated from the Wedepohl model for $Z_C(\omega)$ shown in Figures 2b and 3b, both according behavior in Figure 4b.

Frequency response

The accurate calculation of ZY has been performed in the evaluation of parameter matrices A and B in (Equations 3a and 3b) with the Pollaczek and Wedepohl ground-return models. The nodal representation in (3a) is shown in Figure 5 where the cable system length $l = 40$ km. The open-circuit voltage and short-circuit current frequency responses are shown in Figure 6.

The network elements connected to the transmission cable system are represented by generalized ad-

mittances in the sending end with Y_s and in the remote end with Y_R .

The voltage at the remote end, V_l , and the injected current at the sending end, I_s , are related to the boundary conditions as shown in Figure 5 (Uribe *et al.*, 2002):

$$V_l = H(s)I_s \tag{10a}$$

where

$$H(s) = \{B - (A + Y_s)B^{-1}(A + Y_R)\}^{-1} \tag{10b}$$

$H(s)$ is the transfer function of the network system. Thus, the open-circuit voltage responses for the cable system in Figure 5 are calculated in the following paper section.

Numerical Laplace Inversion

The voltage waveform response at the remote end of the cable system in Figure 5 is synthesized in this paper through the inverse NLT (Wedepohl and Wilcox, 1973; Wedepohl, 1983):

$$v_l(t) = \frac{1}{2\pi j} \int_{c-j\infty}^{c+j\infty} V_l(s) e^{st} ds \tag{11a}$$

The discretization of (11a) leads to the numerical solution of $V_z(t)$ at $z=1$ where $T = m\Delta t$ and $\Omega = n\Delta\omega$ as follows (Uribe *et al.*, 2002; Wedepohl, 1983):

$$v_{lm} \cong \frac{e^{cm\Delta t}}{\Delta t} \left[\frac{1}{N} \sum_{n=0}^{N-1} V_{ln} \sigma(n\Delta\omega) e^{2\pi jmn/N} \right] \tag{11b}$$

$m = 0, 1, \dots, N-1$

where N is the number of time samples and σ_n is the data window which is used for attenuating Gibbs phenomena errors (Wedepohl, 1983). The following Vonn Hann window is applied (Equation 11c).

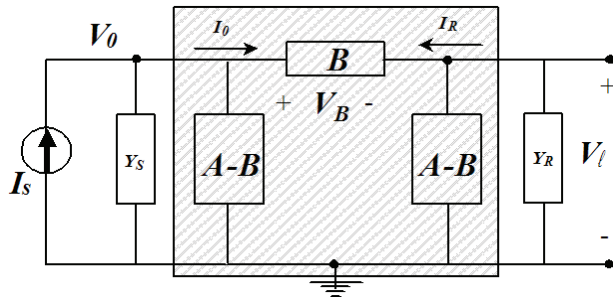
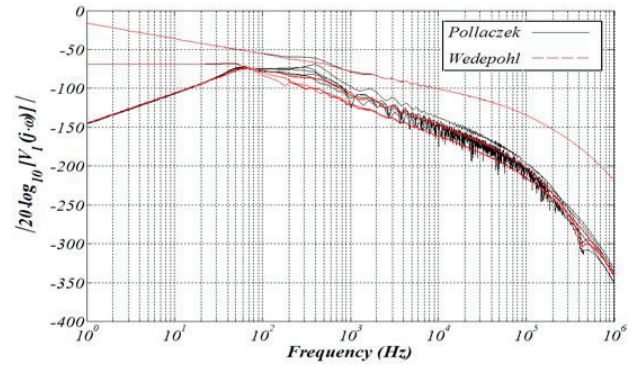
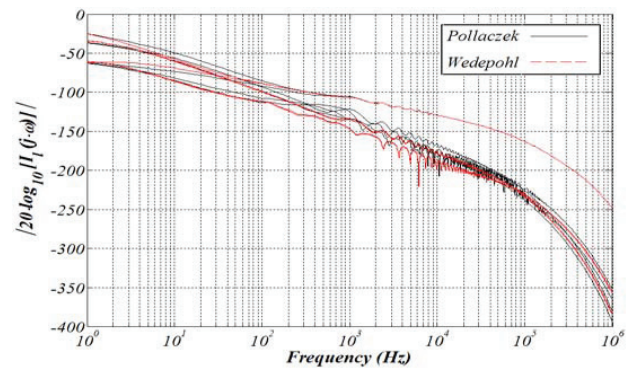


Figure 5. Two port network nodal representation of an underground cable transmission system connected with Y_s and Y_R at its ends



a)



b)

Figure 6. Frequency response for the two port network representation in Figure 5, a) open-circuit voltage response, b) short-circuit current response

$$\sigma(\omega) = 1 + \cos(2\pi\omega/\Omega) / 2 \tag{11c}$$

where Ω is the frequency truncated range. The frequency domain discretization of $V_l(s)$ provokes frequency leaking in the time domain. The damping Laplace factor, c , is thus used to quench frequency leaking errors. However, since Gibbs error is not completely eliminated by data windows, it would be amplified by the undamping function, $\exp(cm\Delta t)$, in (11b). Thus, the selection of a value for c is a trade off. The following criterion has been proposed by Wedepohl (1983):

$$c = -\log_e(\epsilon) / T \tag{11d}$$

where $T = N\Delta t$ is the observation time for the transient and ϵ is the error level whose lower bound is determined by N . The discretization frequency step $\Delta\omega$ at (11b) is implicitly considered as follows:

$$\Delta t \cdot \Delta\omega = 2\pi / N \tag{11e}$$

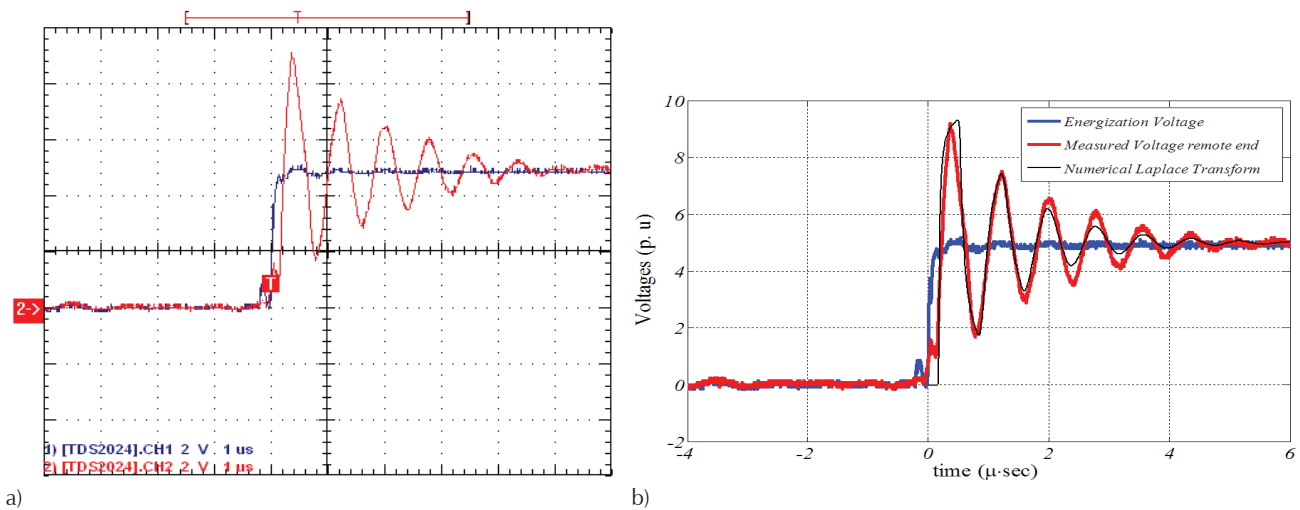


Figure 7. Experimental measurements, a) energization step-voltage at the sending end and its transient response at the remote end of the cable, b) measured and synthesized comparison (through the NLT) voltage transient step responses at the cable remote end

where $N\Delta\omega/2$ is the truncation frequency for the discrete representation of $V_\ell(s)$. Consider now from (11c):

$$2\pi/\Delta t = N\Delta\omega \quad (11f)$$

The left-hand side of (11f) is the sampling frequency while the right hand side is twice the truncation frequency. In addition (11f) agrees with the Nyquist sampling criterion.

Scaled prototype laboratory measurements

An initial scaled experimental setup has been implemented in this paper to perform a qualitative comparison between the obtained voltage measurements in the laboratory and the NLT methodology. A thin wire of 1.302mm^2 (16 AWG) for 600V with $r = 1.25\text{mm}$, $h = 0.1\text{m}$, $\rho_{\text{Cu}} = 1.72 \times 10^{-4} \Omega \cdot \text{m}$, $\rho_g = 1000\Omega \cdot \text{m}$ (it is assumed that the laboratory has a solid rocky soil without moisture), and a cable length of $l = 35\text{m}$ has been used for the scaled test.

A voltage source of 5V is switched at the sending end of the cable conductor as is shown in channel-1 of the oscilloscope obtained in Figure 7a. The transient step voltage response is measured with a TDS2024 oscilloscope at the remote end of the cable as is shown in channel-2 in the same figure.

In Figure 7b, the comparison between both measured voltages and the synthesized Laplace voltage response is illustrated having a good agreement. However, a small attenuation between both measured and synthesized voltage responses can be noticed in this figure. It is probably that the attenuation difference between both curves is due to a mistaken measurement taken from the ground resistivity of the laboratory.

Conclusions

An accurate methodology for calculating ZY parameters for buried cable systems is developed in this paper. Ground-return impedances have been calculated here by solving the Pollaczek integral through direct numerical integration and with an algorithmic strategy proposed by the author.

The influence of approximate ground-return models on modal propagation functions is also discussed in this paper. The voltage transient step response on a single 16AWG prototype cable is measured on a scaled setup experiment. The voltage transient step response on the cable has been also synthesized through the Numerical Laplace Transform.

Both, the measured and the synthesized voltage transient step-responses are in good agreement. Thus, it is possible to suggest a qualitative validation for the NLT technique in power transient analysis applications.

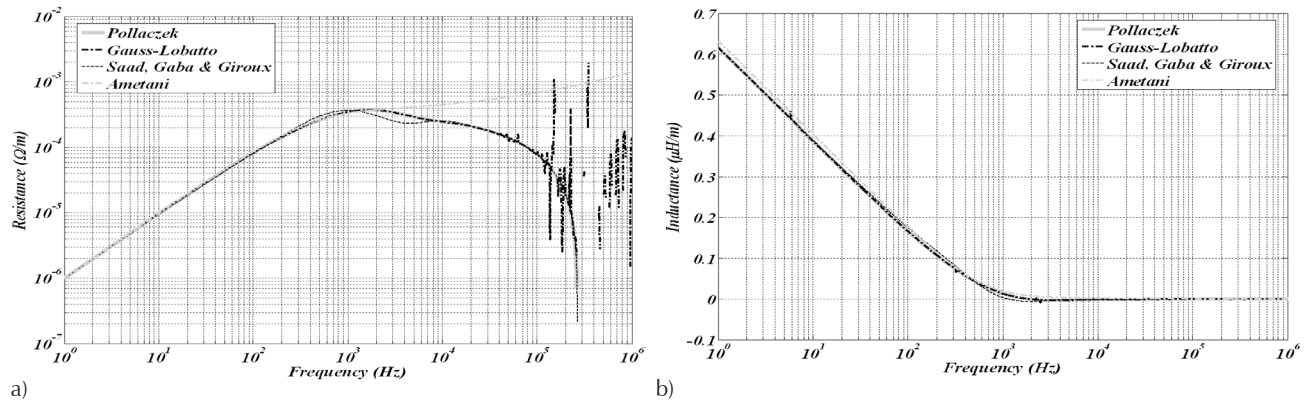


Figure A1. Mutual ground-return impedances for a buried cable system as the one shown in Figure 1 with $x=30\text{m}$ and $\sigma=1\text{S/m}$, a) resistance, b) inductance

Nomenclature

ω	=	angular frequency (in rad/s)
μ_0	=	magnetic permeability of vacuum and air (H/m)
σ	=	soil conductivity (S-m)
ρ_n	=	conductor resistivity for material "n" ($\Omega\cdot\text{m}$)
ϵ_n	=	dimension-less material "n" relative permittivity
$I_n(\cdot)$	=	modified Bessel function of first class and "n" order
$K_n(\cdot)$	=	modified Bessel function of second class and "n" order
d	=	distance between cables, or the radius for the self impedance case (m)
D	=	distance between one cable and the image of the other, or twice the cable depth for the self impedance case (m)
p	=	complex depth of the Skin Effect layer thickness $p=1/\sqrt{j\omega\mu_0\sigma}$
h	=	cable depth, or $h=(h_1+h_2)/2$ for the mutual impedance case (m)
x	=	horizontal distance between cables, or the cable radius for the self impedance case (m)
r_n	=	underground cable core radius (m)
z	=	sending end or remote end of the transmission system (m)
l	=	transmission system length (m)
s	=	Laplace complex variable

Appendix

Figure A1 shows mutual $Z_C(\omega)$ calculated with Pollaczek algorithm (Uribe *et al.*, 2004), Gauss/Lobatto quadrature routine (Gander and Gautschi, 2000), Ametani method (Dommel, 1986) and complex depth formula (Saad, Gaba and Giroux, 1996) for the buried cable system shown in Figure 1, with $x = 30\text{ m}$ and $\sigma = 1\text{ S/m}$.

It can be noticed from this figure that closed-form approximations behaves well at certain ranges, while

the same situation occurs with direct numerical integration which oscillates at certain h, r, x, σ and ω values. Thus, a general assessment of approximate methods of $Z_C(\omega)$ is still missing.

References

- Dommel H.W. Electromagnetic Transients Program Reference Manual (EMTP Theory Book), Prepared for Bonneville Power Administration, P.O. Box 3621, Portland, Ore., 97208, USA, 1986.
- Gander W. and Gautschi W. Adaptive Quadrature-Revisited. *BIT*, volume 40, 2000: 84-101.
- Marti J.R. Accurate Modelling of Frequency-Dependent Transmission Lines in Electromagnetic Transient Simulations. *IEEE Trans. on Power Apparatus and Systems*, volume PAS-101 (issue 1), 1982: 147-155.
- Marti L. Simulation of Transients in Underground Cables with Frequency Dependent Modal Transformation Matrices. *IEEE Transactions on Power Delivery*, volume 3 (issue 3), 1988: 1099-1110.
- Pollaczek F. Über das Feld einer unendlich langen wechselstromdurchflossenen Einfachleitung. *Electrische Nachrichten Technik*, volume 3, (issue 9), 1926: 339-360.
- Saad O., Gaba G., Giroux M. A Closed-Form Approximation for Ground Return Impedance of Underground Cables. *IEEE Transactions on Power Delivery*, volume 11 (issue 3), July 1996: 1536-1545.
- Semlyen A. Discussion to Overhead Line Parameters from Handbook Formulas and Computer Programs, by Dommel H.W. *IEEE Trans. on Power Apparatus and Systems*, volume PAS-104, 1985: 371.
- Schellkunoff S.A. The Electromagnetic Theory of Coaxial Transmission Lines and Cylindrical Shields. *The Bell System Technical Journal*, volume 13, 1934: 532-539.
- Uribe F.A., Naredo J.L., Moreno P., Guardado L. Electromagnetic Transients in Underground Transmission Systems Through

the Numerical Laplace Transform. *Int. Journal of Electrical Power & Energy Systems*, volume 24 (issue 3), March 2002: 215-221.

Uribe F.A., Naredo J., Moreno L.P., Guardado L. Algorithmic Evaluation of Underground Cable Earth Impedances. *IEEE Transactions on Power Delivery*, volume 19 (issue 1), 2004: 316-322.

Wedepohl L.M. Power System Transients: Errors Incurred in the Numerical Inversion of the Laplace Transform, Proceedings of the Twenty-Six Midwest Symposium on Circuits and Systems 15-16 August, 1983, pp. 174-178.

Wedepohl L.M., Nguyen H., Irwin G. Frequency-Dependent Transformation Matrices for Untransposed Transmission Lines. *IEEE Trans. on Power Systems*, volume 11 (issue 3), August 1996: 1538-1546.

Wedepohl L.M. and Wilcox D.J. Transient Analysis of Underground Power-Transmission Systems. *Proc. IEE*, volume 120 (issue 2), 1973: 253-260.

Citation for this article:

Chicago citation style

Uribe-Campos, Felipe Alejandro. Laplace Synthesis Validation Through Measurements on Underground Transmission Cables. *Ingeniería Investigación y Tecnología*, XV, 04 (2014): 575-584.

ISO 690 citation style

Uribe-Campos F.A. Laplace Synthesis Validation Through Measurements on Underground Transmission Cables. *Ingeniería Investigación y Tecnología*, volume XV (issue 4), October-December 2014: 575-584.

About the author

Felipe Alejandro Uribe-Campos. Received the B. Sc. and M. Sc. degrees of Electrical Engineering, both from the State University of Guadalajara, in 1994 and 1998, respectively. During 2001 he was a visiting researcher at the University of British Columbia, B.C., Canada. In 2002 he received the Dr. Sc. degree of Electrical Engineering from the Center for Research and Advanced Studies of Mexico. The dissertation was awarded with the Arturo Rosenblueth prize. From 2003 to 2006 was a full professor with the Electrical Graduate Program at the State University of Nuevo Leon, México. From May 2006. He joined the Electrical Engineering Graduate Program at the State University of Guadalajara, México, where he is currently a full time researcher. Since 2004, he is a member of the National System of Researchers of Mexico. His primary interest is the electromagnetic simulation of Biological tissues for early Cancer detection and power system harmonic and transient analysis.